

Artwork Requirements

Here At Outhouse Designs, It's All About The Art! Our talented staff of award-winning artists are here to offer assistance in providing you with the most creative, cost effective solution to your needs. If you decide to provide artwork for your project, using one of the following formats will help the job go smoother, quicker and more accurately.

Artwork Submission:

- File upload to our ftp site, www.outhousedesigns.com
- CD, Zip or portable USB/firewire Drive

Primary Graphic Software:

- Adobe Illustrator, Adobe Photoshop

Acceptable File Formats:

- Vector Images: Illustrator, Freehand or Corel "AI", "EPS", or "PDF" (please convert all text to outlines/paths)
- Raster images: Photoshop "PSD", "BMP", "TIF", "JPG" or "PDF"

Compression Software:

- Stuffit

Important:

- Send vector art when possible
- Always convert text to outlines
- Please specify ink colors to be used
- Avoid sending artwork placed in programs such as Word, Powerpoint or QuarkXpress.

Art Charges:

- Graphic services are billed at \$20 per haf hour.
- Art charges will be incurred if your artwork needs to be touched up, reconstructed, color separated or manipulated in any way.

NOTE:

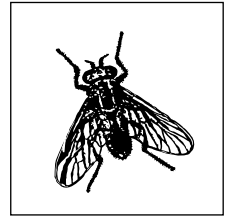
If you provide us with original art and/or disks, it is our policy to keep them for 30 days, after which we can not be responsible for their fate. When you pick up your order, please remember to ask for your materials back.

Acceptable File Formats:

VECTOR:

Illustrator "AI", Freehand or Corel Draw "EPS" File.

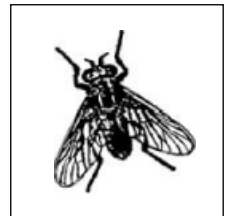
**Resolution is not a factor*



RASTER:

Photoshop "PSD", "BMP", "TIF", "JPG" or "PDF"
File resolution at least 200 dpi with artwork sized to 100%.

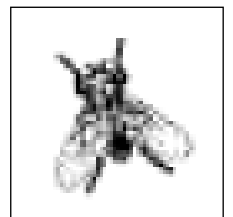
**Resolution dependent*



Unacceptable File Formats:

WEB IMAGES:

Photoshop "GIF" or "JPG" files at 72 dpi



Note: Most images found online will not work for reprinting on garments. These images may appear to be clean and usable on your monitor, but reproduce poorly.